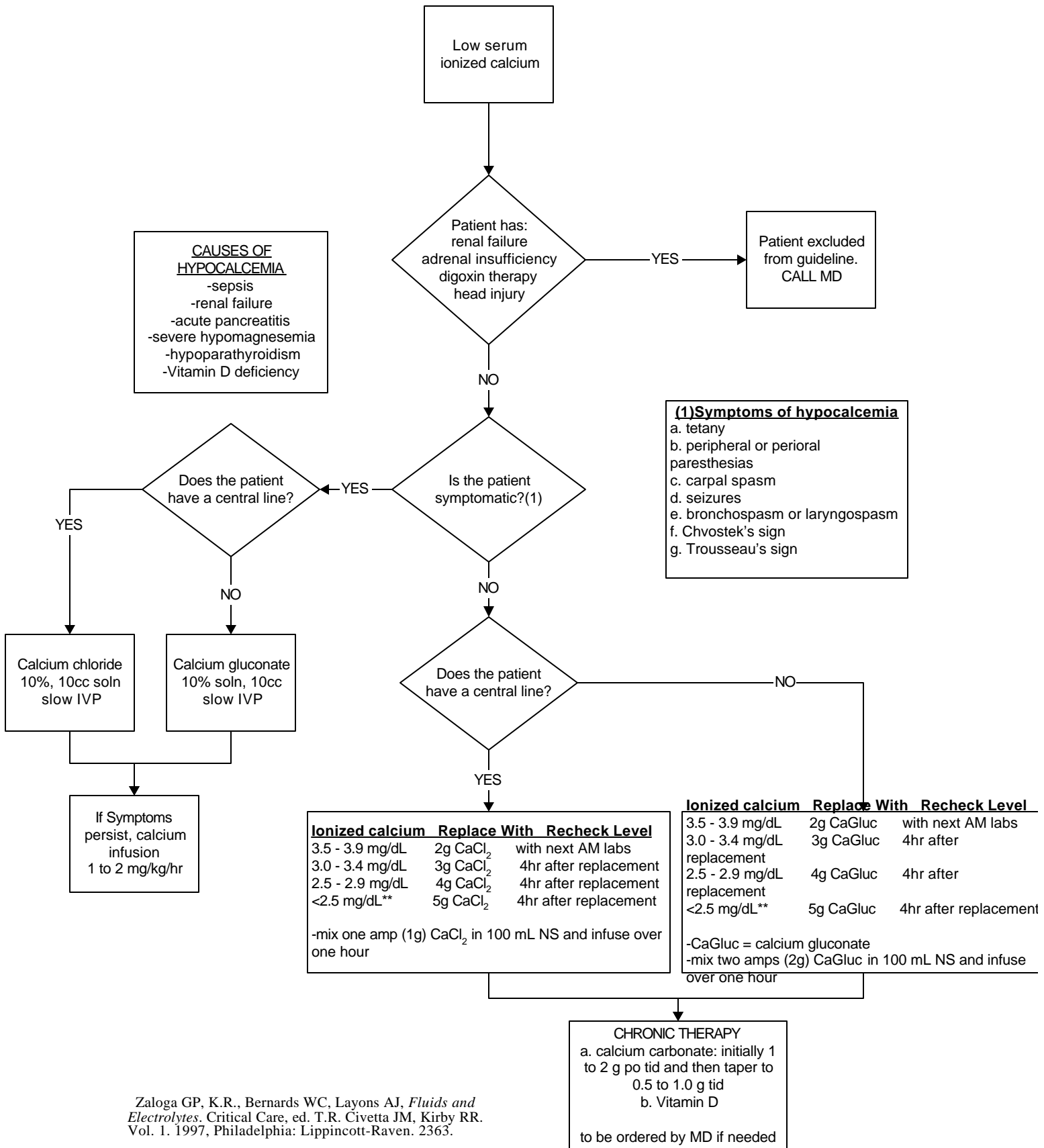


Burn Center Guideline: Treatment of Hypocalcemia



Ionized calcium	Replace With	Recheck Level
3.5 - 3.9 mg/dL	2g CaCl ₂	with next AM labs
3.0 - 3.4 mg/dL	3g CaCl ₂	4hr after replacement
2.5 - 2.9 mg/dL	4g CaCl ₂	4hr after replacement
<2.5 mg/dL**	5g CaCl ₂	4hr after replacement

-mix one amp (1g) CaCl₂ in 100 mL NS and infuse over one hour

Ionized calcium	Replace With	Recheck Level
3.5 - 3.9 mg/dL	2g CaGluc	with next AM labs
3.0 - 3.4 mg/dL	3g CaGluc	4hr after replacement
2.5 - 2.9 mg/dL	4g CaGluc	4hr after replacement
<2.5 mg/dL**	5g CaGluc	4hr after replacement

-CaGluc = calcium gluconate
-mix two amps (2g) CaGluc in 100 mL NS and infuse over one hour

CHRONIC THERAPY

- calcium carbonate: initially 1 to 2 g po tid and then taper to 0.5 to 1.0 g tid
- Vitamin D

to be ordered by MD if needed

Zaloga GP, K.R., Bernards WC, Layons AJ, *Fluids and Electrolytes*. Critical Care, ed. T.R. Civetta JM, Kirby RR. Vol. 1. 1997, Philadelphia: Lippincott-Raven. 2363.