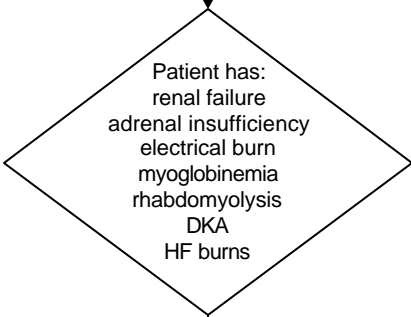


Burn Center Guideline: Hypokalemia

Low serum potassium level

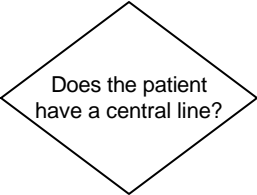


Call MD for further orders

Determine potassium need

<u>Serum K+</u>	<u>Replacement level</u>	<u>Recheck K+</u>
3.3 - 3.5 mEq/L	40 mEq	immediately after replacement
3.0 - 3.2 mEq/L	50 mEq	immediately after replacement
2.6 - 2.9 mEq/L	60mEq call MD	immediately after replacement
<2.6 mEq/L	80 mEq KCL IV infuse as 40 mEq/h times 2 if central line is present and with continuous monitoring **Call MD**	immediately after replacement

<u>Serum K+</u>	<u>K+ deficit</u>
3-4 mEq/L	100-200 mEq
2-3mEq/L	200-400 mEq



CENTRAL LINE:
Mix 20 - 40 mEq KLC in 100 cc NS and infuse at 20mEq/h unless serum K+ is <2.6 mEq/L

PERIPHERAL IV:
Mix 20 mEq KCL in 250 NS and infuse at 10 mEq/h

Add lidocaine 1% 1 to 2 mL to each bag prn for patient comfort